



Temptronic

ECO-710E-WT THERMOSTREAM®

-80° to +225°C

The ECO Series is designed for any environment where audible noise and heat dissipation are concerns. It operates on an energy-efficient, 20 amp, 50/60Hz circuit with proprietary technology delivering quiet, smooth sounding operation. Additionally, the system **does not require annual leak testing** because its gas charge is below the CO₂ equivalent limit for greenhouse gas emissions as specified by Regulation EU 517/2014.

These fast, precise temperature forcing systems provide effective testing and conditioning of electronic components, boards and modules. Built with proven ThermoStream reliability and supported worldwide.

PERFORMANCE:

Temperature Range* - No LN₂ or LCO₂ Required

-80 to +225°C

Transition Rate*

-55 to +125°C, approx. 10 seconds

125 to -55°C, approx. 10 seconds

System Airflow Output*

4 to 18scfm (1.9 to 8.5 l/s) Continuous

TEMPERATURE CONTROL:

Temperature Display & Resolution

+/- 0.1°C

Temperature Accuracy

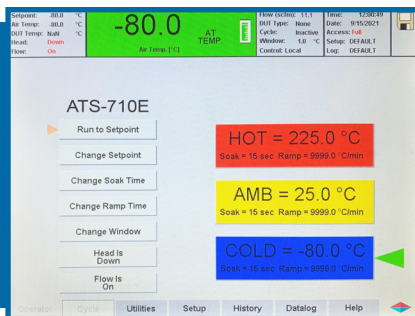
1.0°C (when calibrated against NIST standard)

DUT Temperature Control

Proprietary control algorithm enables DUT temperature to be directly controlled

DUT Sensor Ports

Internal Diode, Thermocouples (T & K), RTD (100 Ohm platinum), Digital DUT



E Series Systems Equipped with Embedded Software Controls, Eliminating Windows® OS

- Significant reduction in security vulnerabilities
- Minimizes software and hardware obsolescence concerns
- Improved responsiveness of the touch screen
- Faster system boot and startup times

FEATURES:

Frost Free Feature

Dry air purge for tester interface, prevents condensation: 0.5 to 3scfm (0.25 to 1.5 l/s)

ECO Friendly Features

- Automatic Power Reduction: reduces power usage during idle periods
- Heat Only Mode: reduces power usage when cold temperatures are not used

Heated Defrost Feature

Quickly removes moisture buildup from internal chiller

- Embedded Control System
- Local & Remote Operations
- On-Screen Diagnostics
- Ethernet, IEEE-488, RS232, USB
- Customizable and savable test setups
- Datalog Storage (USB)
- User Defined Temperature Limits

APPLICATION OPTIONS:

Custom Test Enclosures

Custom enclosures designed to meet unique test applications.

MobileTemp™ Thermal Chambers

Temperature Chambers designed specifically for uses with ATS THERMOSTREAM® Systems. See Additional Datasheets for details.

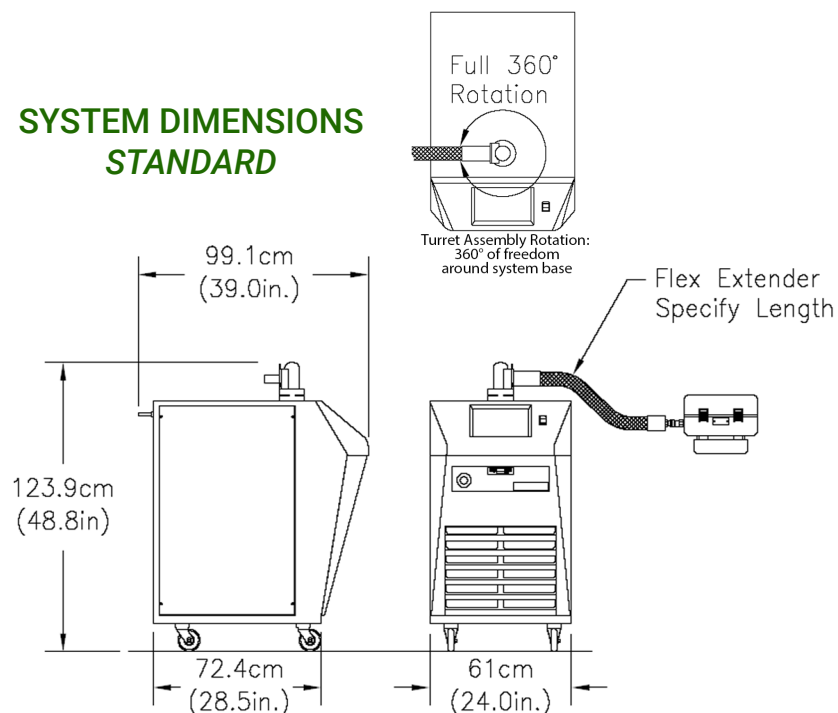
**Under nominal operating conditions
Ultimate low temperatures (±1°) achieved at 18scfm*



inTEST Thermal Solutions
an inTEST Company

info@inTESTthermal.com | 1.781.688.2300
41 Hampden Road | Mansfield, MA 02048 USA

SYSTEM DIMENSIONS STANDARD



FACILITY REQUIREMENTS

Power ¹	200 - 250 VAC (230V nominal), 50/60Hz 20 amp, 1phase
FACILITY WATER SUPPLY²	
Cooling Water	3.5 gpm (13.25 lpm) 20°C inlet water temperature 20-30 psi (1.38 to 2.07 bar) pressure differential for water inlet and outlet. Cooling water must be non-corrosive
OPERATING ENVIRONMENT²	
Operating Temperature	+20° to +28°C; +23°C nominal
Humidity	0 to 60%; 45% nominal
CONNECTION INFORMATION	
¾" Female NPT fittings for connecting Facility Water Supply (IN) and Return (OUT) to the unit.	

WEIGHTS & DIMENSIONS

Base ³	Width: 61.0 cm (24 in.), Depth: 72.4 cm (28.5 in.), Height: 123.9 cm (48.8 in.)
System Weight	Not packed: 226 kg (500 lbs.), Packed: 341 kg (762 lbs.)
Mobility	Four static dissipative, swivel caster wheels
FlexExtender Length	FlexExtender hose available in 1', 2', and 4' standard lengths, custom lengths available
Noise Level	<56dBA

SERVICE & SAFETY

Refrigerants	HCFC and CFC-free, non-toxic, non-flammable
Serviceability	Auto-diagnostics and field replaceable modules
Over Temperature Protection	+230°C (factory set): Operator can set high and low air temperature limits

CE, RoHS, EU 517/2014 (<10 tons CO2 eq, no annual leak testing required)

¹System is configured for operation within voltages listed above using an internal transformer. Please specify power configuration with order

²Under operating conditions which are greater or less than nominal, performance may be less than specification provided

³An additional 20.3cm (8 in.) clearance is required for supply connections and cabinet ventilation

